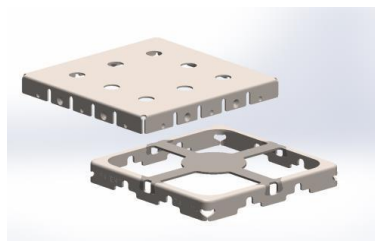


Low Height Standard Two-Piece Board-Level Shields



Optimize PCB and Enclosure Real Estate - Reliable and Ease of Assembly – Ease of Repair - Short Lead Time – No Tool Cost

The Low Height Standard Two-Piece Board Level Shields incorporate a removable pick bridge and rigid corners along with a low, 2.15 mm assembled height. The frame has a removable pick bridge to allow easy access to components underneath for re-work or addition of thermal pads or other contacts. The rigid corners enhance structure rigidity which preserves co-planarity. This innovative design offers an ideal solution for board-level EMI shielding applications in which access to the shielded components is required and space between the printed circuit board (PCB) and enclosure is critical.

FEATURES

- Low 2.15 mm assembled height (1.8 mm under frame)
- Same foot prints as current BMI-S-202-F/C and BMI-S-203-F/C (dimensions below)
- 0.13 mm cover material thickness
- 0.20 mm frame material thickness
- ReMovl Pick & Place Bridge
- Pull force to remove pick bridge <3 lbs
- Rigid corners for structure rigidity
- Tin plated cold roll steel material

BENEFITS

- Enables low height enclosures
- Enhanced co-planarity of 0.08
- Easy access to components under frame for re-work or inspection
- Allows thermal interface material or absorber to be added to the cover
- Enables pick and place assembly process
- Removable Pick & Place Bridge eliminates noise and vibration between traditional bridge and cover

VALUE

- Optimized PCB/enclosure real estate
- Ease of assembly
- High reliability of assembly at low cost
- Ease of repair
- Ready to ship (short lead time)
- No tooling cost

SAMPLES

- Inventory available

USA: +1.866.928.8181

Europe: +49.8031.24600

Asia: +86.755.2714.1166

www.laird.com



SPECIFICATIONS

PART NUMBERS	BMI-S-202-F-20-R	BMI-S-202-C-20	BMI-S-203-F-20-R	BMI-S-203-C-20
Dimensions (mm)(±0.05)	16.50x16.50x2.00	16.90x16.90x1.75	26.21x26.21x2.00	26.61x26.61x1.75
Co-planarity (mm)	0.08	n/a	0.08	n/a
Available Material	Tin plated CRS	Tin Plated CRS	Tin Plated CRS	Tin Plated CRS

EMI-DS-low height standard BLS_102114

Any information furnished by Laird and its agents is believed to be accurate and reliable. All specifications are subject to change without notice. Responsibility for the use and application of Laird materials rests with the end user, since Laird and its agents cannot be aware of all potential uses. Laird makes no warranties as to the fitness, merchantability or suitability of any Laird materials or products for any specific or general uses. Laird, Laird Technologies, Inc or any of its affiliates or agents shall not be liable for incidental or consequential damages of any kind. All Laird products are sold pursuant to the Laird Technologies' Terms and Conditions of sale in effect from time to time, a copy of which will be furnished upon request. © Copyright 2014 Laird Technologies, Inc. All Rights Reserved. Laird, Laird Technologies, the Laird Logo, and other marks are trademarks or registered trademarks of Laird Technologies, Inc. or an affiliate company thereof. Other product or service names may be the property of third parties. Nothing herein provides a license under any Laird or any third party intellectual property rights.